



## Goffstown Rail-Trail Bicycle/Pedestrian Project



*Goffstown Rail Trail*

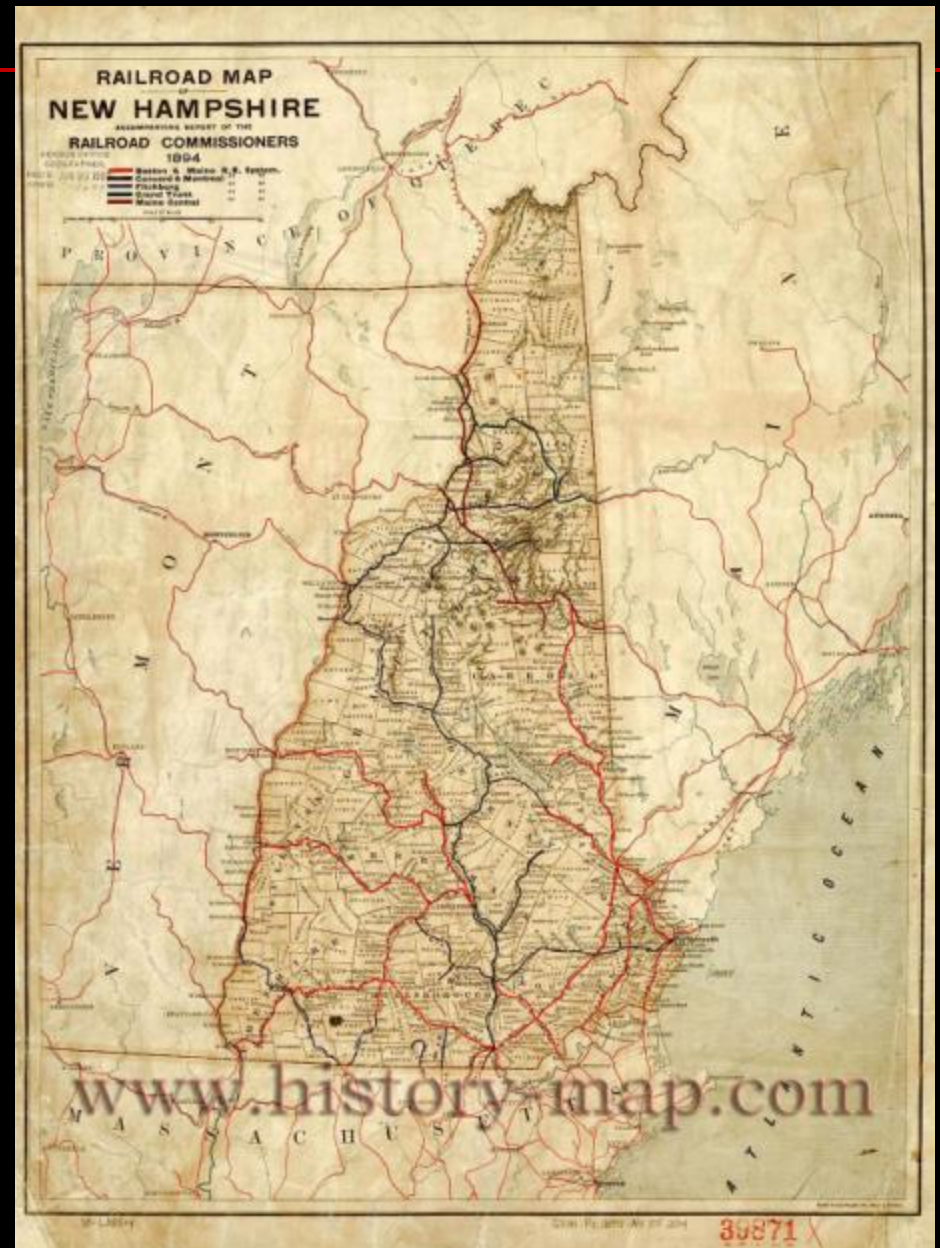
## Agenda

- ▷ Project Background
- ▷ Purpose and Need Statement
- ▷ Existing Conditions
- ▷ Design Criteria
- ▷ Proposed Improvements
- ▷ Estimated Costs
- ▷ Public Comment Period



# Some Background on Rail Trails

## New Hampshire's Rail Lines:

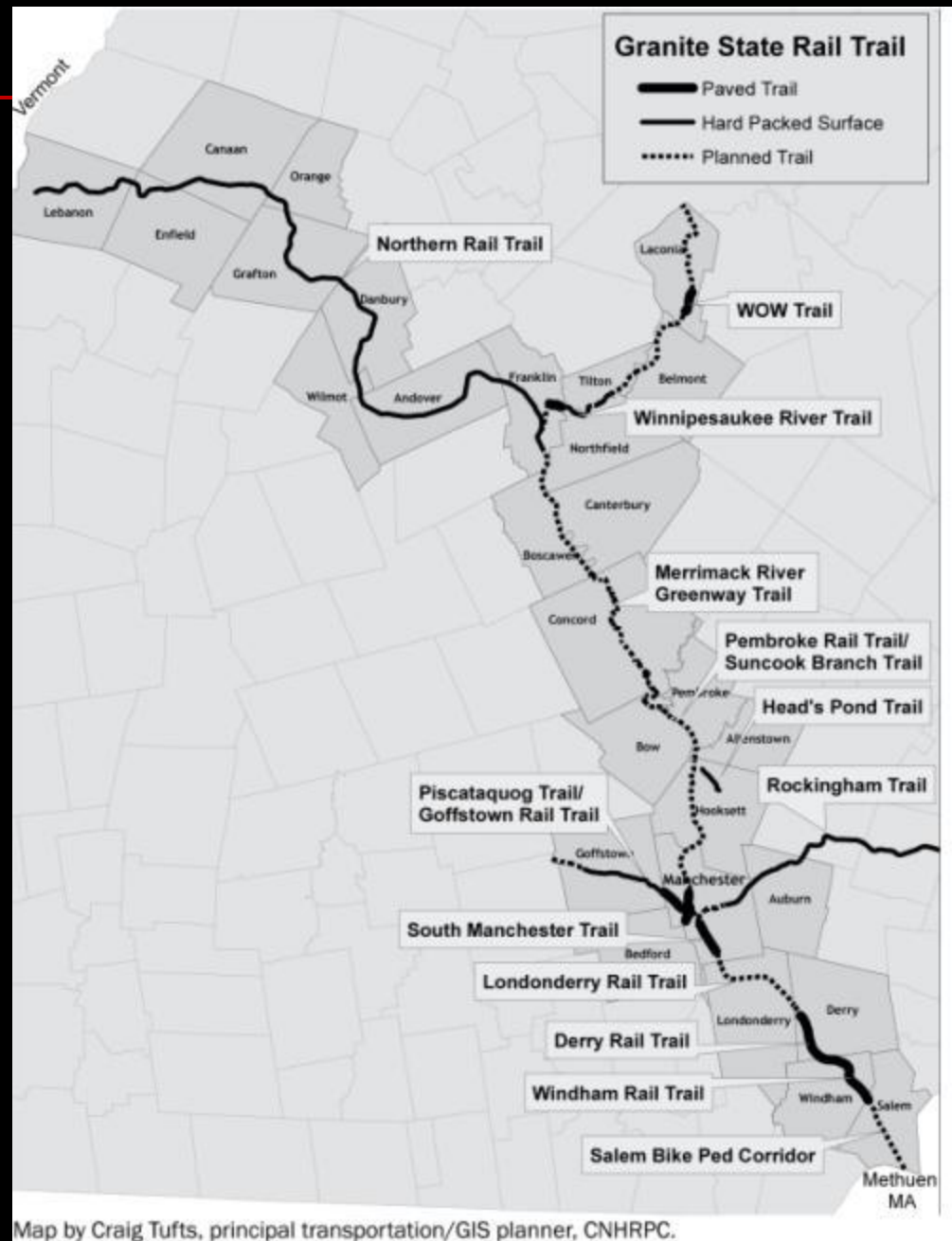


*Goffstown Rail Trail*



# Some Background on Rail Trails

## New Hampshire's Rail Trails:



*Goffstown Rail Trail*

# Some Background on Rail Trails

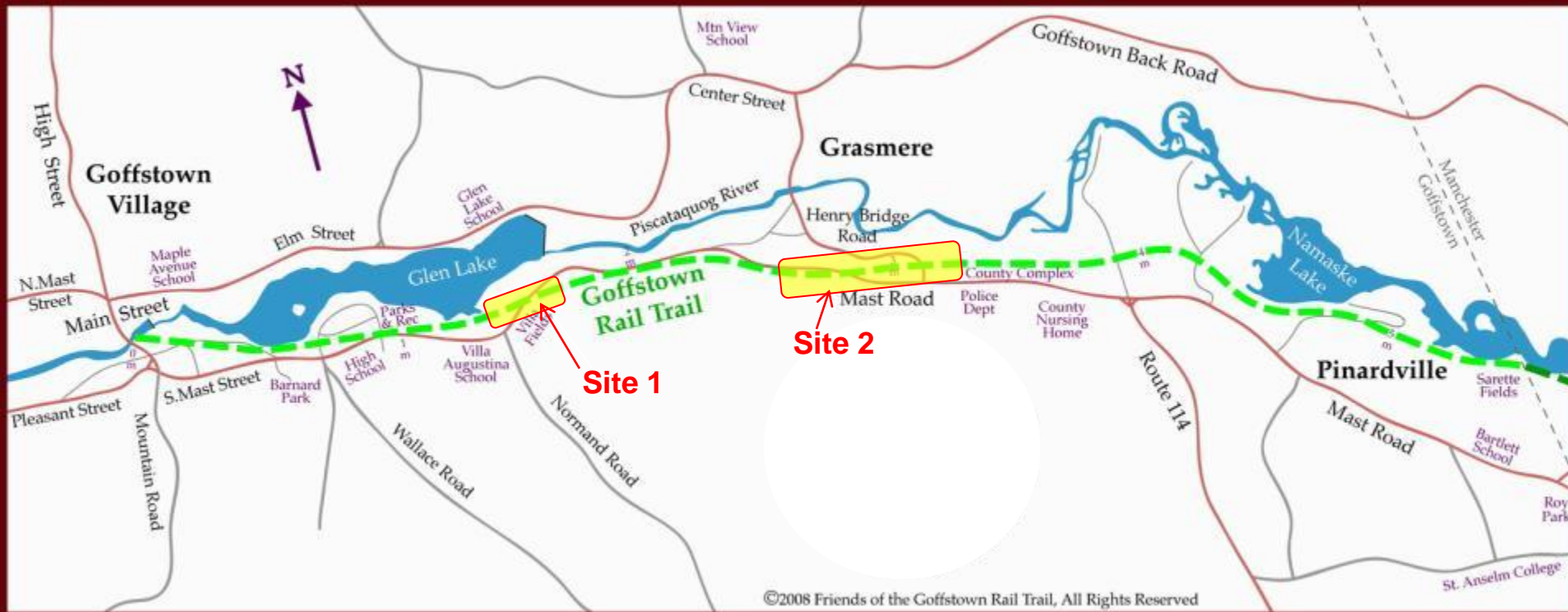
## New Hampshire's Rail Trails:



*Goffstown Rail Trail*

# Project Background

## Goffstown Rail Trail



*Goffstown Rail Trail*

# Project Purpose & Need

## Purpose:

- Enhance non-motorized (primarily bike and pedestrian) accommodations
- Address obstacles and concerns that introduce discontinuities in the overall trail
- Provide alternative transportation opportunities
- Increase opportunities for physical exercise and recreation
- Improve safety at the trail's public road crossings



*Goffstown Rail Trail*

# Project Purpose & Need

## Need:

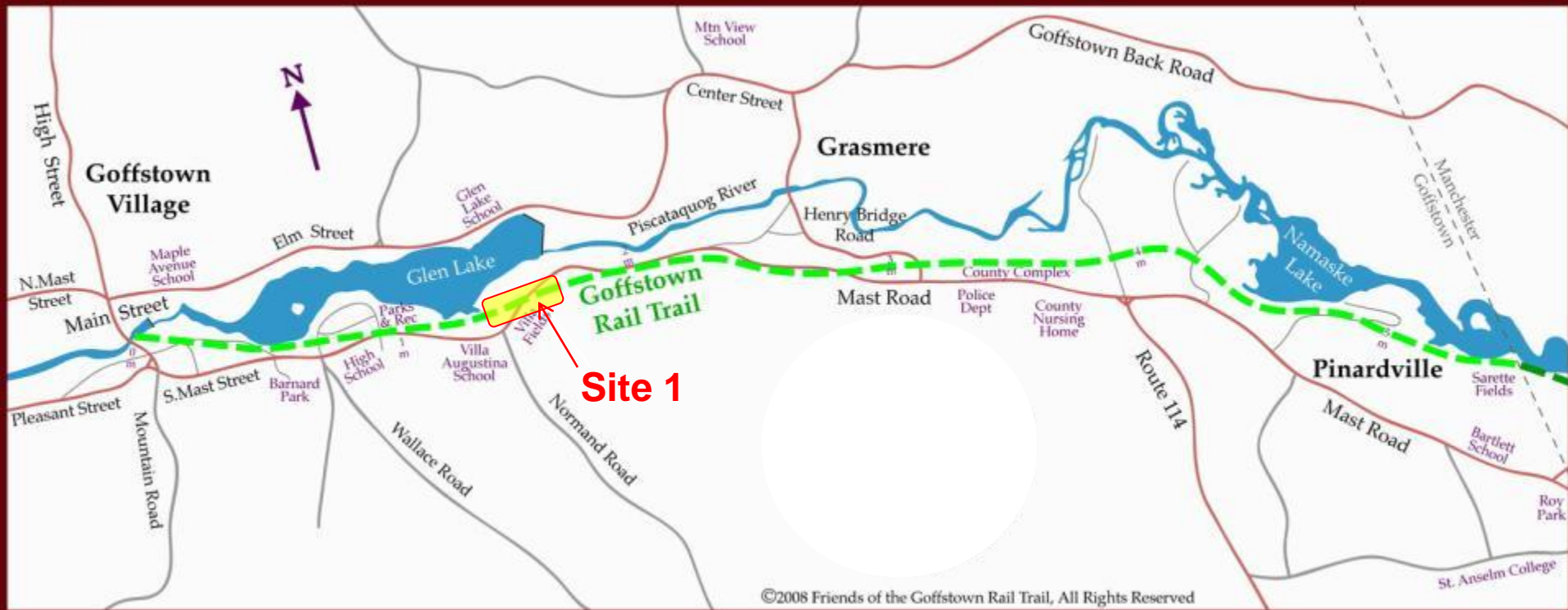
- Two at-grade trail crossings of Mast Road (NH 114)
- At-grade trail Crossing of Henry Bridge Road
- Old Henry Bridge Road gully crossing
- Increasing trail use



*Goffstown Rail Trail*



# Existing Conditions – Site 1



*Goffstown Rail Trail*

# Existing Conditions – Site 1



*Goffstown Rail Trail*



# Existing Conditions – Site 1



*Goffstown Rail Trail*

# Existing Conditions – Site 1



Site 1 Rte 114 Crossing  
at Ball Fields  
Facing West



*Goffstown Rail Trail*



# Existing Conditions – Site 1



Site 1 Rte 114 Crossing  
at Ball Fields  
Facing West



*Goffstown Rail Trail*

# Existing Conditions – Site 1



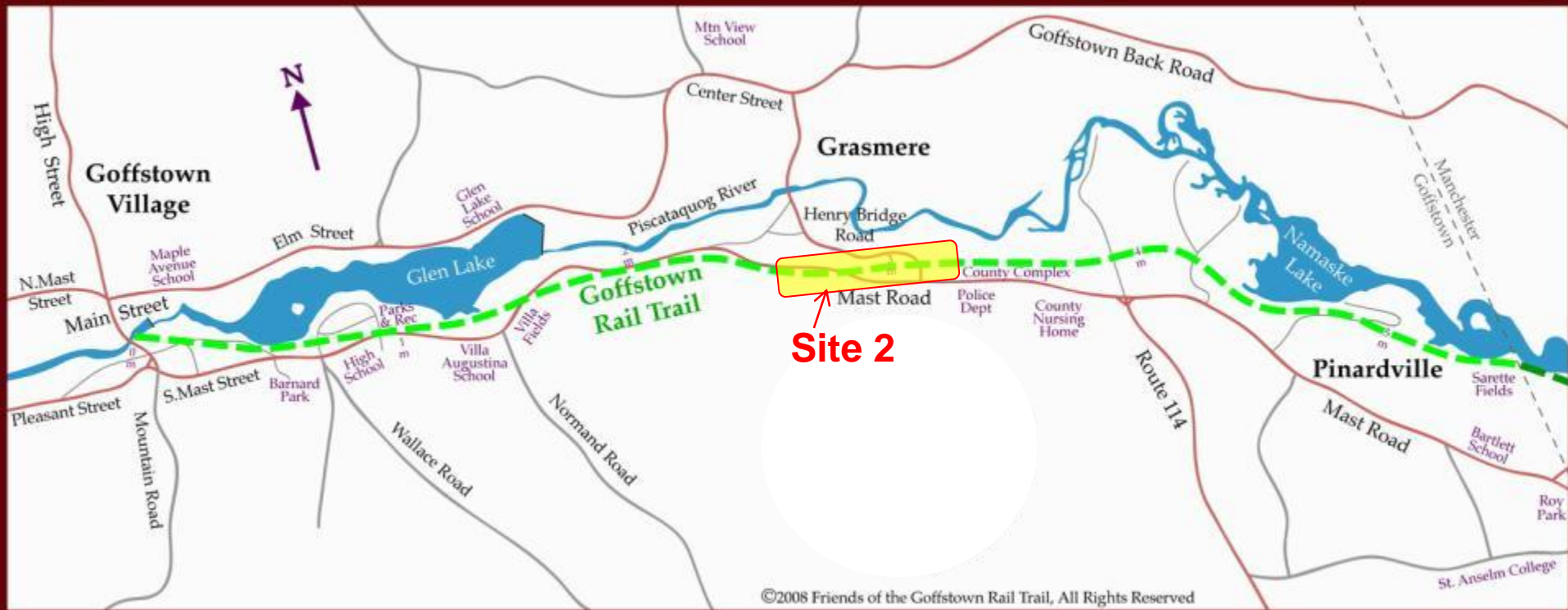
Site 1 Rte 114 Crossing  
at Ball Fields  
Facing East



*Goffstown Rail Trail*



# Existing Conditions – Site 2



*Goffstown Rail Trail*

# Existing Conditions – Site 2



*Goffstown Rail Trail*



# Existing Conditions – Site 2



*Goffstown Rail Trail*



# Existing Conditions – Site 2



*Goffstown Rail Trail*

# Existing Conditions – Site 2



Site 2 Rte 114 Crossing  
near Pro Landscape



*Goffstown Rail Trail*



# Existing Conditions – Site 2





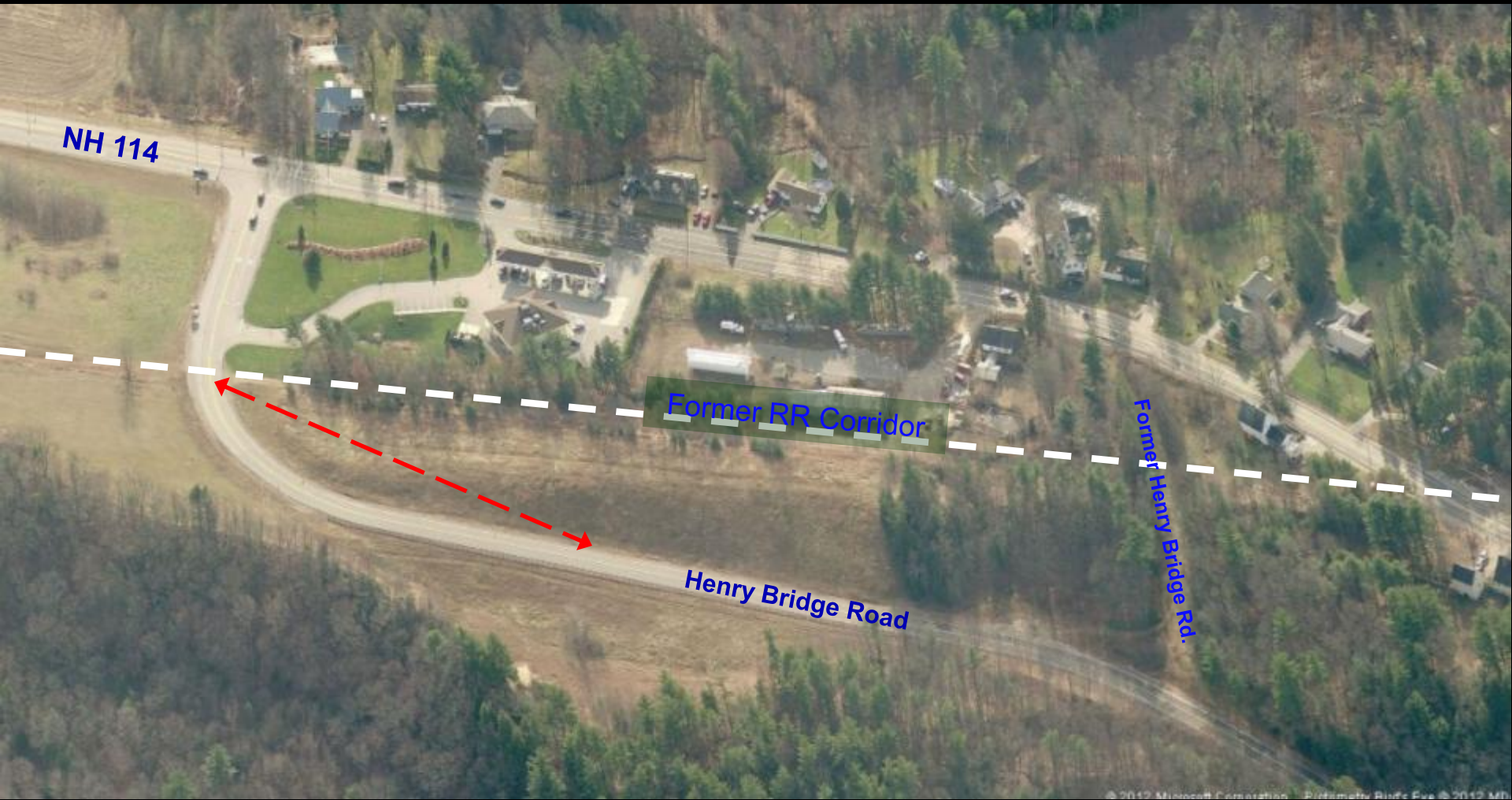
# Existing Conditions – Site 2



*Goffstown Rail Trail*



# Existing Conditions – Site 2



*Goffstown Rail Trail*

# Existing Conditions – Site 2



Henry Bridge Road



*Goffstown Rail Trail*



# Existing Conditions – Site 2



Former Henry Bridge Road “Gully”



*Goffstown Rail Trail*



# Environmental and Cultural Resources



*Goffstown Rail Trail*



# Design Criteria - 10' Wide Granular Trail



*Goffstown Rail Trail*



# Design Criteria - 10' Wide Granular Trail



*Goffstown Rail Trail*

# Project Solutions NH 114 Crossing - Site 1



*Goffstown Rail Trail*



# Project Solutions NH 114 Crossing - Site 1



*Goffstown Rail Trail*

# Project Solutions

## Road Crossings



Rapid Flashing LED Pedestrian Crossing Beacons



*Goffstown Rail Trail*



# Project Solutions

## Road Crossings

### Rapid Flashing LED Pedestrian Crossing Beacons

- Pedestrian Activated
- Alerts Motorists
- Not Meant to Stop Cars



# Project Solutions

## Road Crossings



Route 101 Marlborough, NH

### Rapid Flashing Pedestrian Crossing Beacons



*Goffstown Rail Trail*



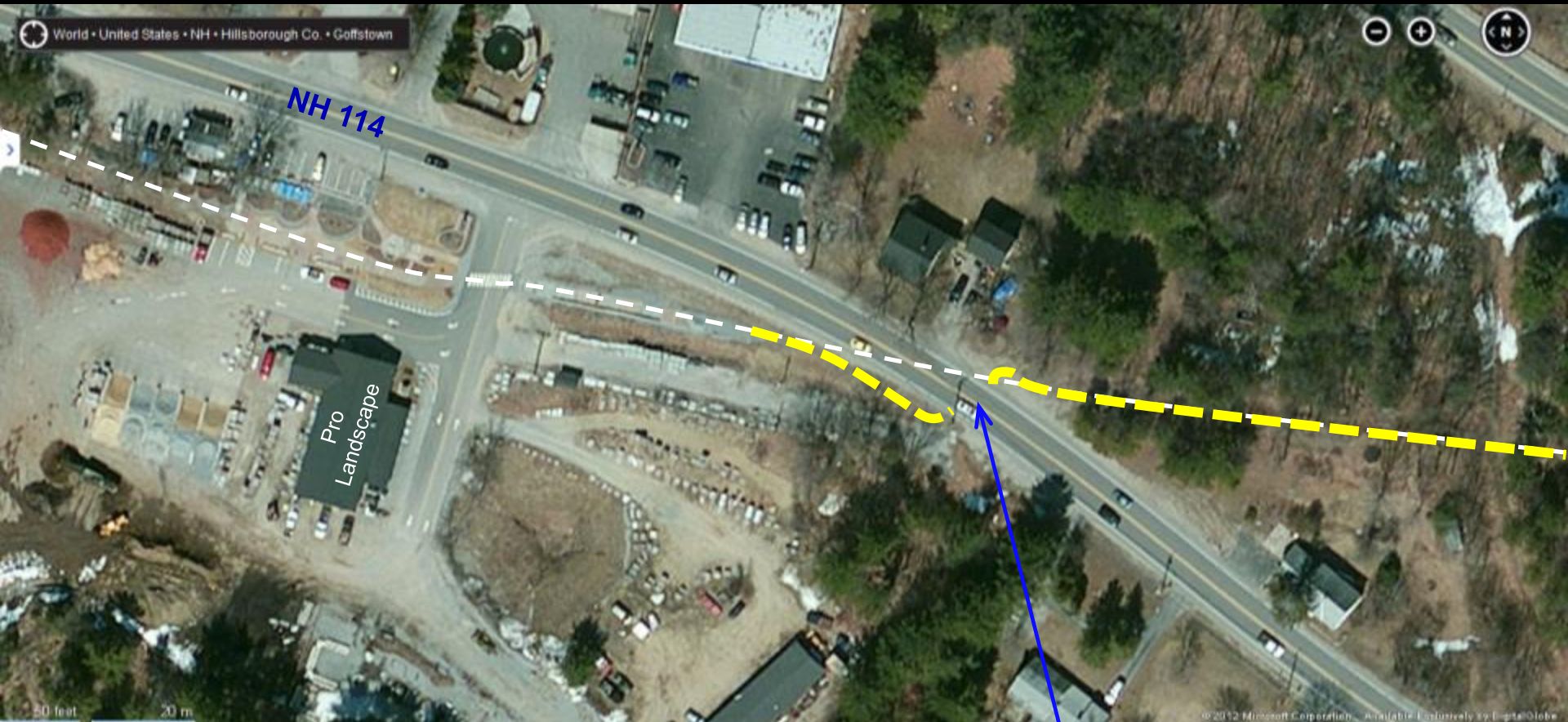
# Project Solutions

## Road Crossings



*Goffstown Rail Trail*

# Project Solutions – Site 2



**Install  
RRFB's**



*Goffstown Rail Trail*



# Project Solutions – Site 2



*Goffstown Rail Trail*

# Project Solutions

## Road Crossings



Cut Embankment to  
Improve Sight Lines



*Goffstown Rail Trail*

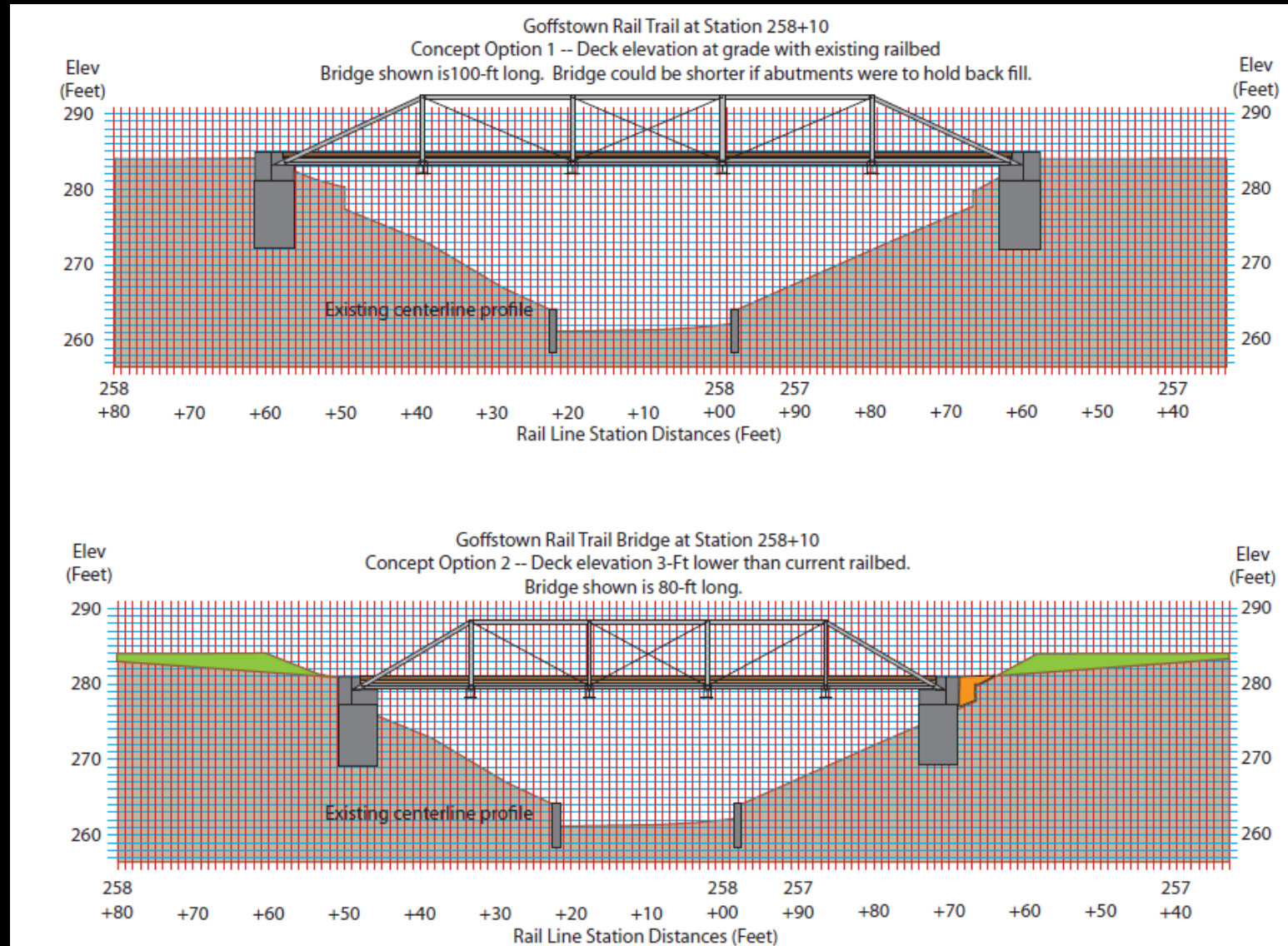


# Project Solutions – Site 2



*Goffstown Rail Trail*

# Project Solutions Old Henry Bridge Road Crossing

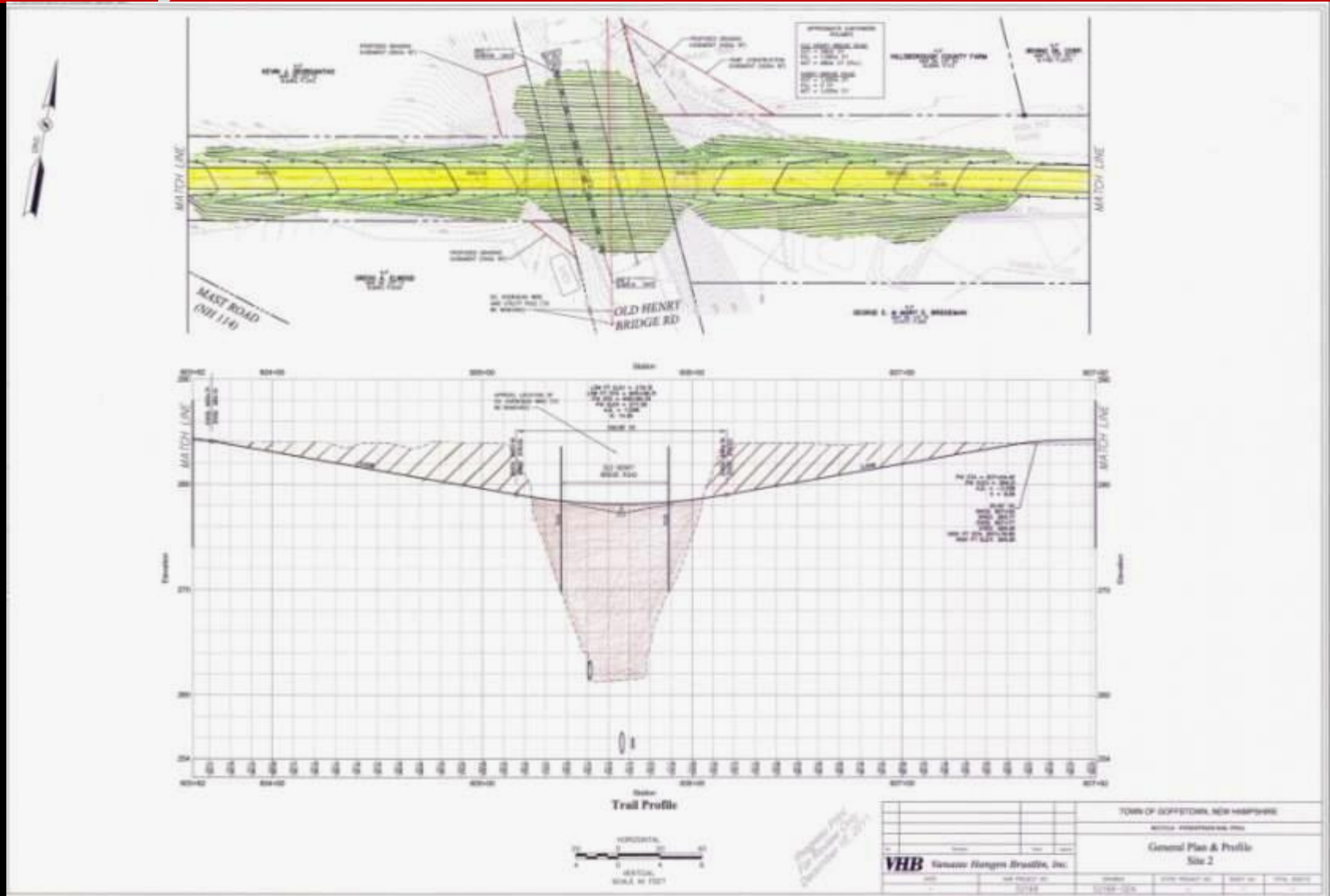


Considered Former Henry Bridge Crossing Alternative

*Goffstown Rail Trail*



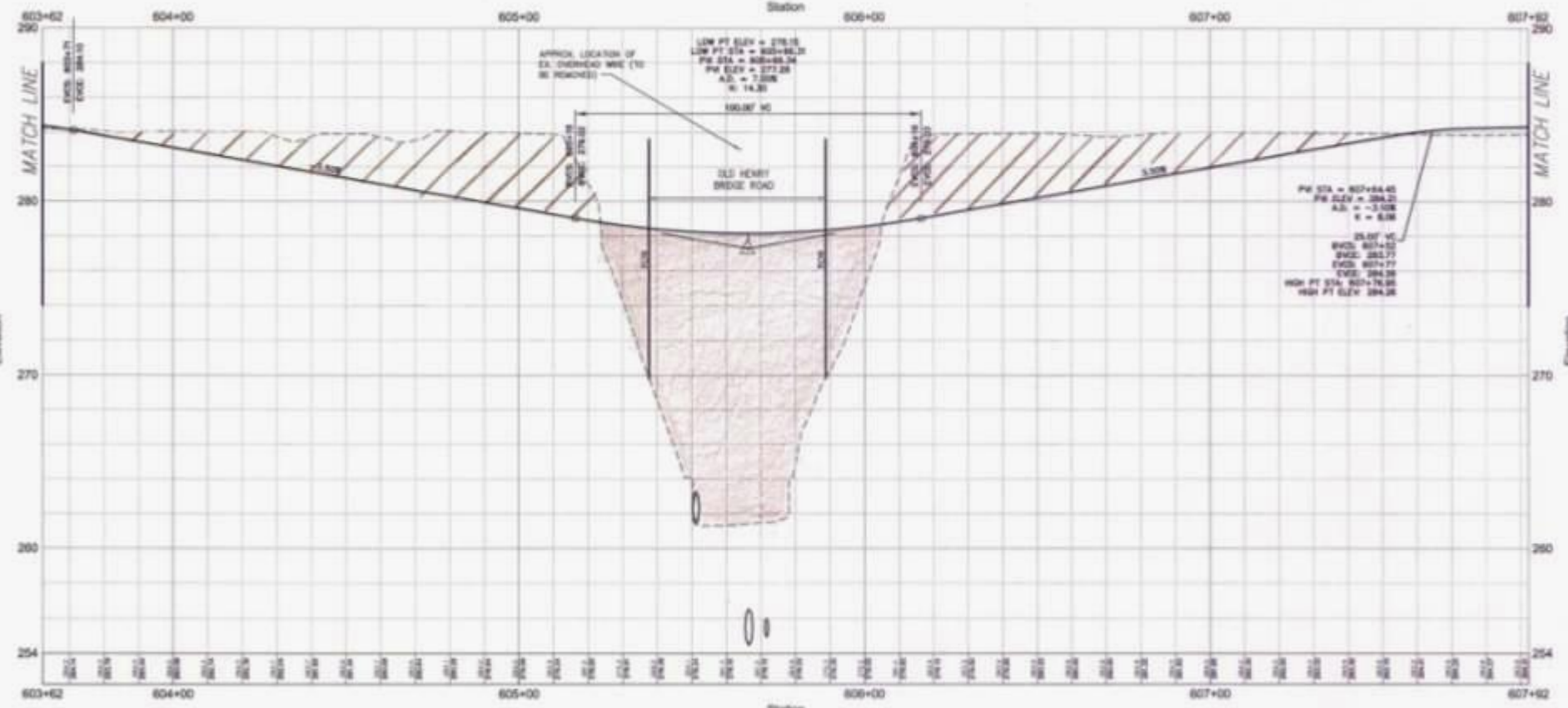
# Project Solutions Old Henry Bridge Road Crossing



Selected Former Henry Bridge Crossing Alternative

*Goffstown Rail Trail*

# Old Henry Bridge Road Crossing



# Proposed Profile

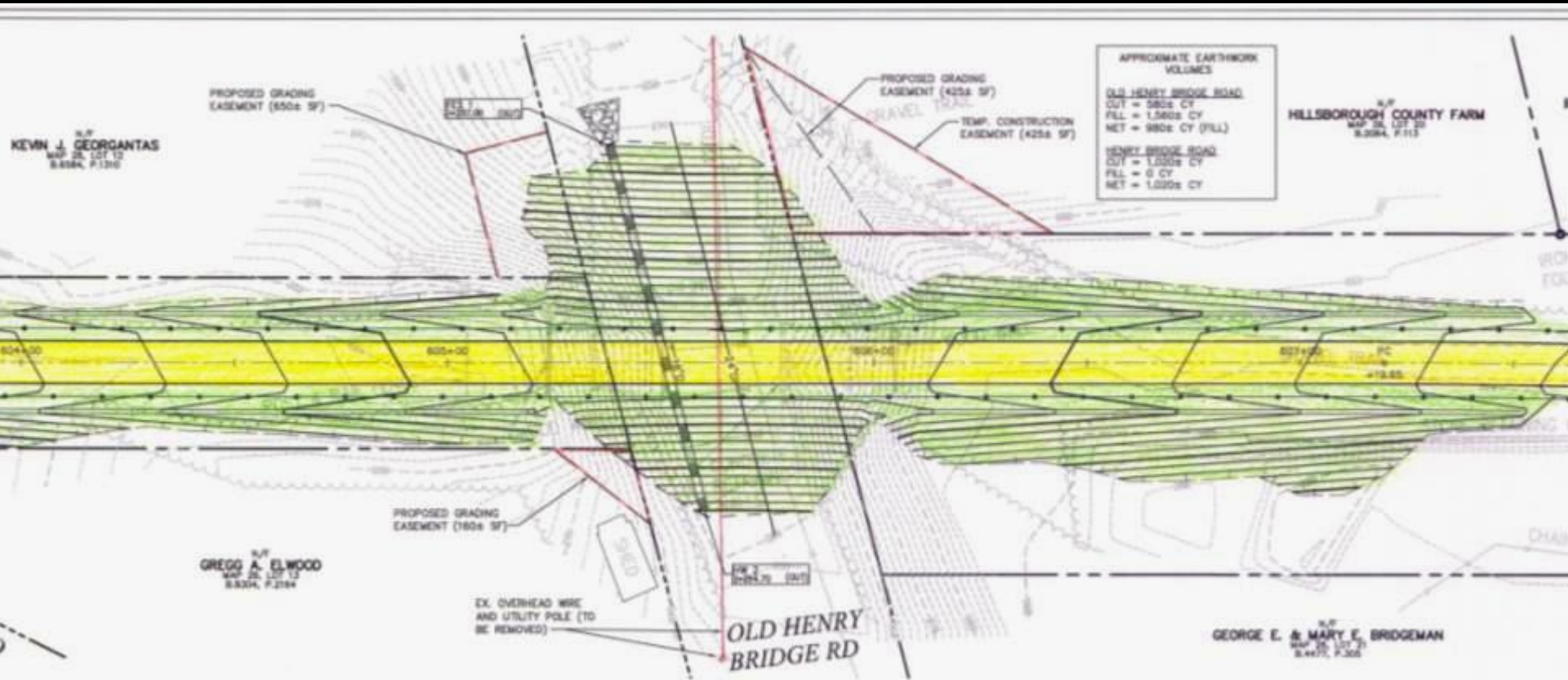


## Goffstown Rail Trail



# Project Solutions

## Old Henry Bridge Road Crossing



Goffstown Rail Trail

# Estimated Costs

## Estimated Construction Costs:

Site 1:	\$ 102,000
Site 2:	\$ 168,000.
<hr/>	
Total	\$ 270,000.

Not including right-of-way and construction inspection costs.



*Goffstown Rail Trail*



# We welcome your questions and comments



Email: [gbakos@vhb.com](mailto:gbakos@vhb.com)



*Goffstown Rail Trail*